



E-Tork

150 to 8850 in-lb Heavy Duty Electric Actuators

The ET Series Electric Actuators are available in AC and DC voltages. With output torques from 150 to 8850 inch-pound they are some of the most compact, high-output design in the market.



Technical Features:

- Direct mount on RUB ball valves, for a compact package and perfect shaft alignment
- 50% rated duty cycle reversing motor with thermal overload protection
- Rugged corrosion resistant construction with aluminum housing, durable epoxy/polyurethane
- Coating, 316 stainless shaft and fasteners
- Manual override shaft - stainless steel type 316
- Can be wired in parallel with other
- Working temperature -40° to +150°F
- E-Torks – separate circuits not required
- ISO 5211 mounting
- Fast, simple travel adjustments
- 2 limit switches for travel indication
- Heat treated steel gearing, lubricated for life • 180° travel capability
- NEMA 4 and 4X enclosure

Options:

- Up to 2 additional limit switches



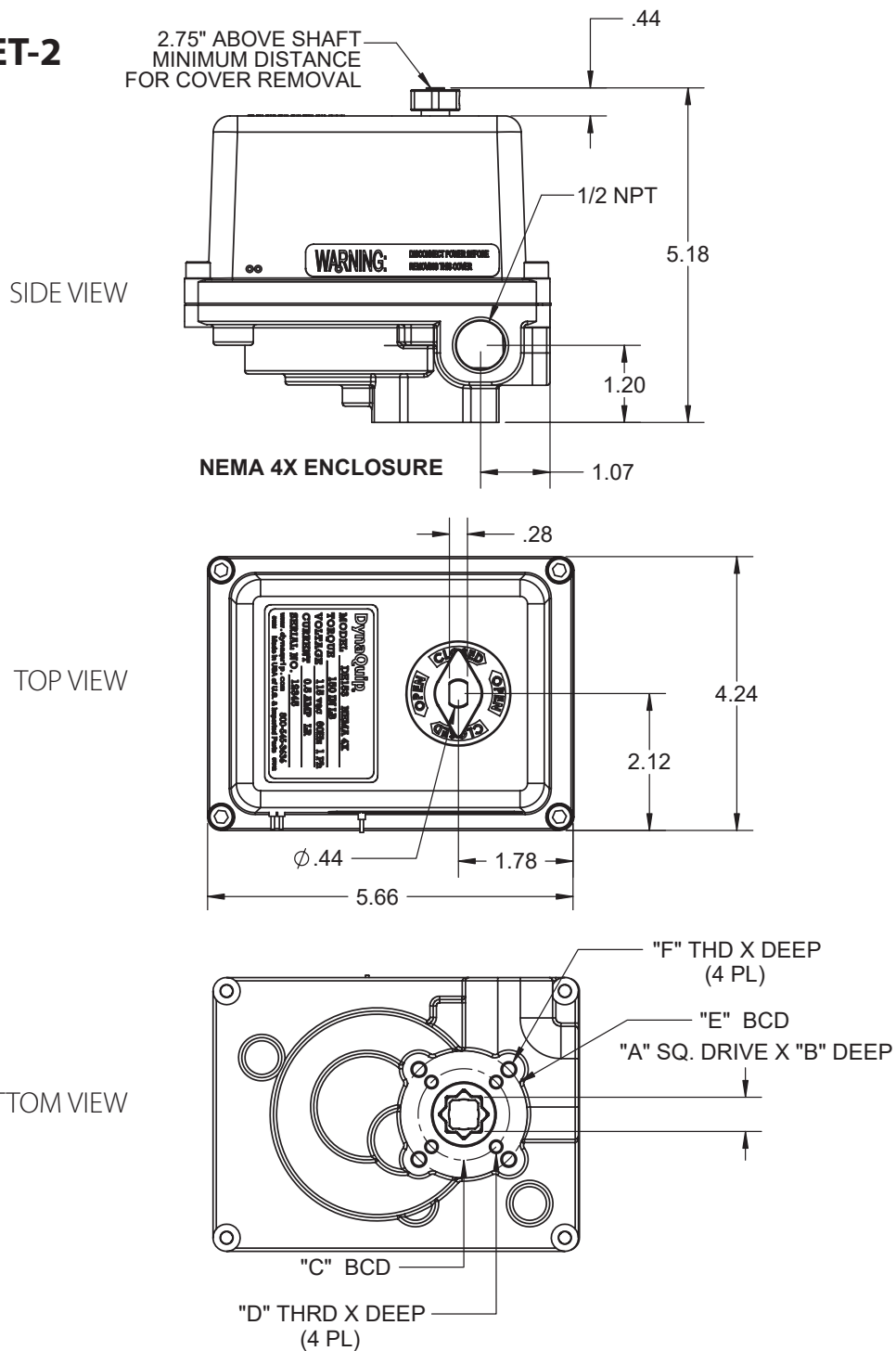
ET Actuator with s.134 SS Ball Valve

Model	Code	Torque in-lb	Seconds 90°	Power
ET-1	BAA1019N	150	2.5s	110VAC
	BAA1019C	150	2.5s	24 VAC/VDC
	BAA1019A	150	2.5s	220VAC
ET-2	BAA1020N	300	6s	110VAC
	BAA1020C	300	6s	24 VAC/VDC
	BAA1020A	300	6s	220VAC
ET-3	BAA1021N	443	20s	110VAC
	BAA1021C	443	20s	24 VAC
	BAA1021D	443	20s	24 VDC
	BAA1021A	443	20s	220VAC
ET-4	BAA1022N	795	15s	110VAC
	BAA1022C	795	15s	24 VAC
	BAA1022D	795	15s	24 VDC
	BAA1022A	795	15s	220VAC
ET-5	BAA1023N	1.325	22s	110VAC
	BAA1023C	1.325	22s	24 VAC
	BAA1023D	1.325	22s	24 VDC
	BAA1023A	1.325	22s	220VAC
ET-6	BAA1024N	2.000	26s	110VAC
	BAA1024C	2.000	26s	24 VAC
	BAA1024D	2.000	26s	24 VDC
	BAA1024A	2.000	26s	220VAC
ET-7	BAA1025N	3.540	16s	110VAC
	BAA1025C	3.540	16s	24 VAC
	BAA1025D	3.540	16s	24 VDC
	BAA1025A	3.540	16s	220VAC
ET-8	BAA1026N	4.425	28s	110VAC
	BAA1026C	4.425	28s	24 VAC
	BAA1026D	4.425	28s	24 VDC
	BAA1026A	4.425	28s	220VAC
ET-9	BAA1027N	5.750	35s	110VAC
	BAA1027C	5.750	35s	24 VAC
	BAA1027D	5.750	35s	24 VDC
	BAA1027A	5.750	35s	220VAC
ET-10	BAA1028N	8.850	46s	110VAC
	BAA1028C	8.850	46s	24 VAC
	BAA1028D	8.850	46s	24 VDC
	BAA1028A	8.850	46s	220VAC

Dimensions:

Dimensions are in inches

ET-1 / ET-2

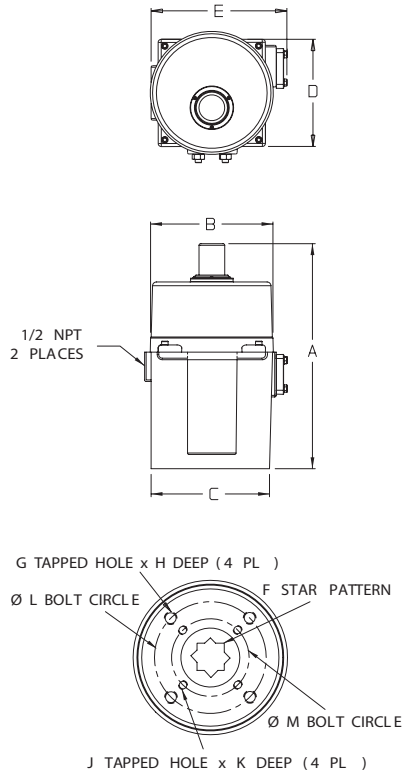


Model	Torque In-lb	Speed sec/90°	A	B	C	D	E	F	AMPS LOCKED ROTOR		WT. LBS
									AC	12-24 DC/AC	
ET-1	150	2.5	.354 (9 mm)	.53	1417 (F03)	M5 .44 DP	1969 (F05)	M6 .46 DP	.5	3.0	4.0
ET-2	300	6	.551 (14 mm)	.68	1417 (F03)	M5 .46 DP	1969 (F05)	M6 .46 DP	.5	3.0	4.0

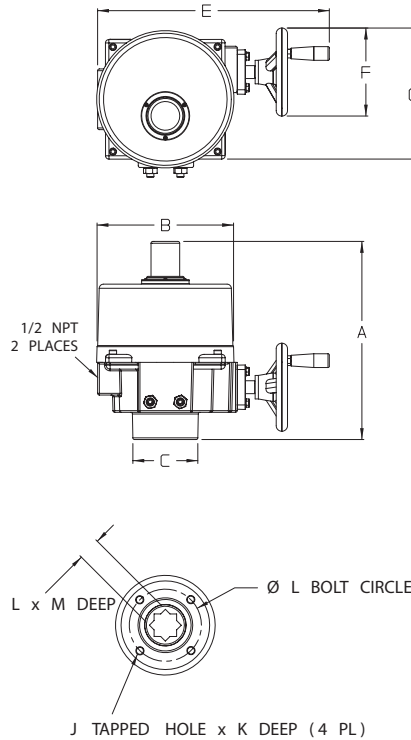
Dimensions:

Dimensions are in inches

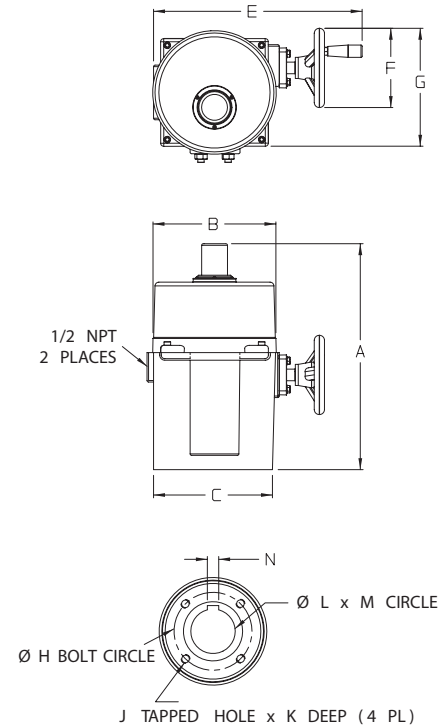
ET-3



ET-4 / ET-5 / ET-6 ET-7 / ET-8 / ET-9



ET-10



Model	Torque In-lb	Cycle Time	A	B	C	D	E	F	G	H	J	K	L	M	N
ET-3	443	20 sec	7.730 (196)	4.490 (114)	3.839 (98)	4.185 (106)	5.101 (130)	0.664 (17)	M6	0.590 (15)	M8	0.750 (19)	2.750 (70)	1.969 (50)	--
ET-4	795	15 sec	10.04 (255)	7.87 (200)	3.55 (90.1)	--	13 (330)	4.92 (125)	7.87 (200)	2.76 (70)	M8	.75 (19)	.866 (22)	1.18 (30)	--
ET-5	1325	22 sec													
ET-6	2000	26 sec													
ET-7	3540	16 sec	12.40 (315)	9.21 (234)	4.92 (125)	--	14.96 (380)	7.68 (195)	11.81 (300)	4.02 (102)	M10	.63 (16)	1.417 (36)	1.57 (40)	--
ET-8	4425	28 sec													
ET-9	5750	35 sec													
ET-10	8850	46 sec	23.23 (590)	10.24 (260)	7.09 (180)	--	17.72 (450)	11.61 (295)	13.39 (340)	5.51 (140)	M16	1.14 (29)	1.378 (35)	2.36 (60)	.39 (10)

WARNING: This product can expose you to chemicals including lead which is known to the state of California to cause cancer and birth defects or other reproductive harm. For more information go to www.P65Warnings.ca.gov

For complete disclaimer: www.rubinc.com/disclaimer

XCESU - 4237

RuB, Inc. - www.rubinc.com